



FINAL PLACEMENT REPORT

BATCH OF 2023-25



In our steadfast commitment to fostering continuous growth and excellence, we, the Mandevians, are proud to share yet another milestone. We are delighted to announce the successful completion of the Final Placement Process for the 2023-25 batch, which included 311 students from the PGDM program, 125 students from the PGDM-HRM program, 114 students from the PGDM-IB program and 28 students from the PGDM-BAN program.

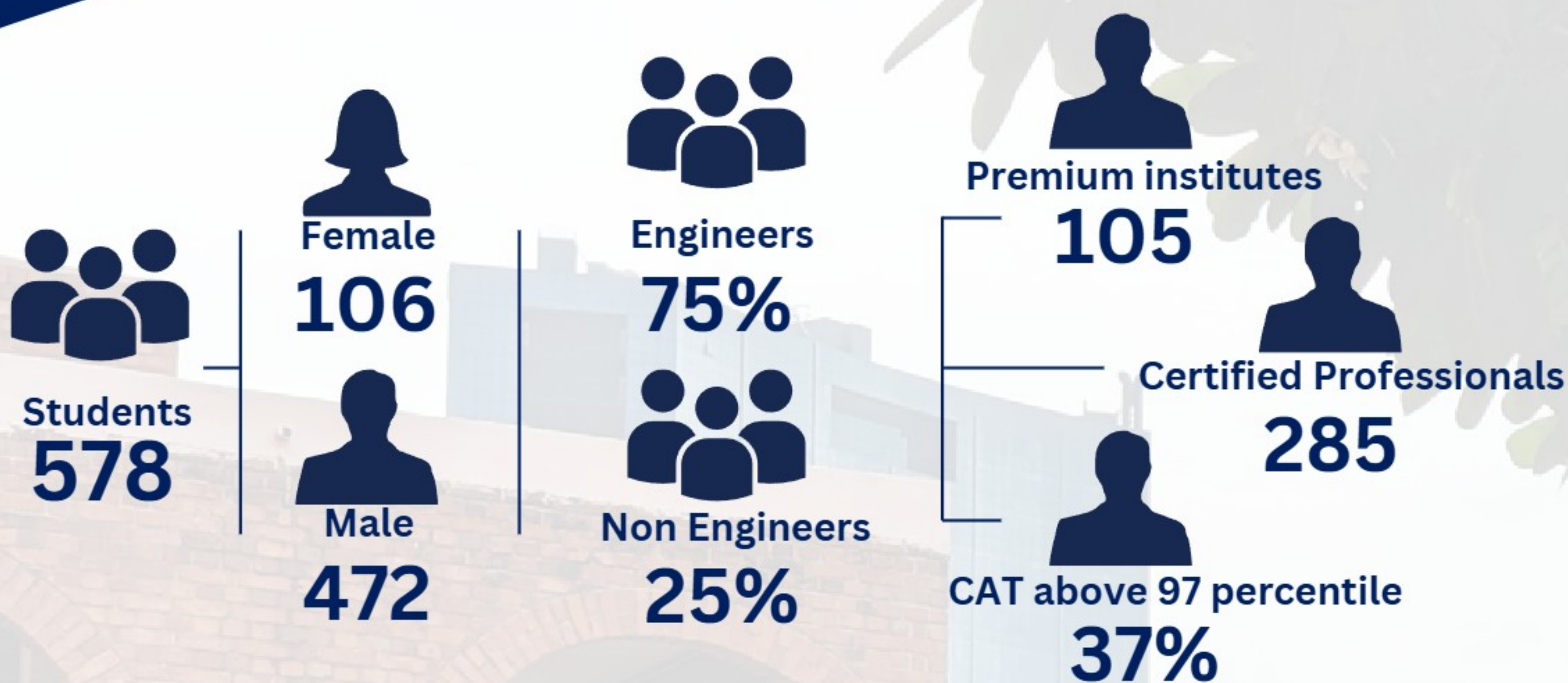
The unwavering confidence of leading industry players in the talent nurtured at MDI Gurgaon remains strong. A total of 147 companies participated in the recruitment process, reflecting the diversity of our students in terms of work experience, academic backgrounds, and an expanded batch size. Notably, 67 organizations joined us as first-time recruiters, offering new and exciting placement opportunities.

We extend our sincere gratitude to our dedicated faculty and administration, whose unwavering support has been instrumental in achieving this significant milestone.

SENIOR PLACEMENT COMMITTEE



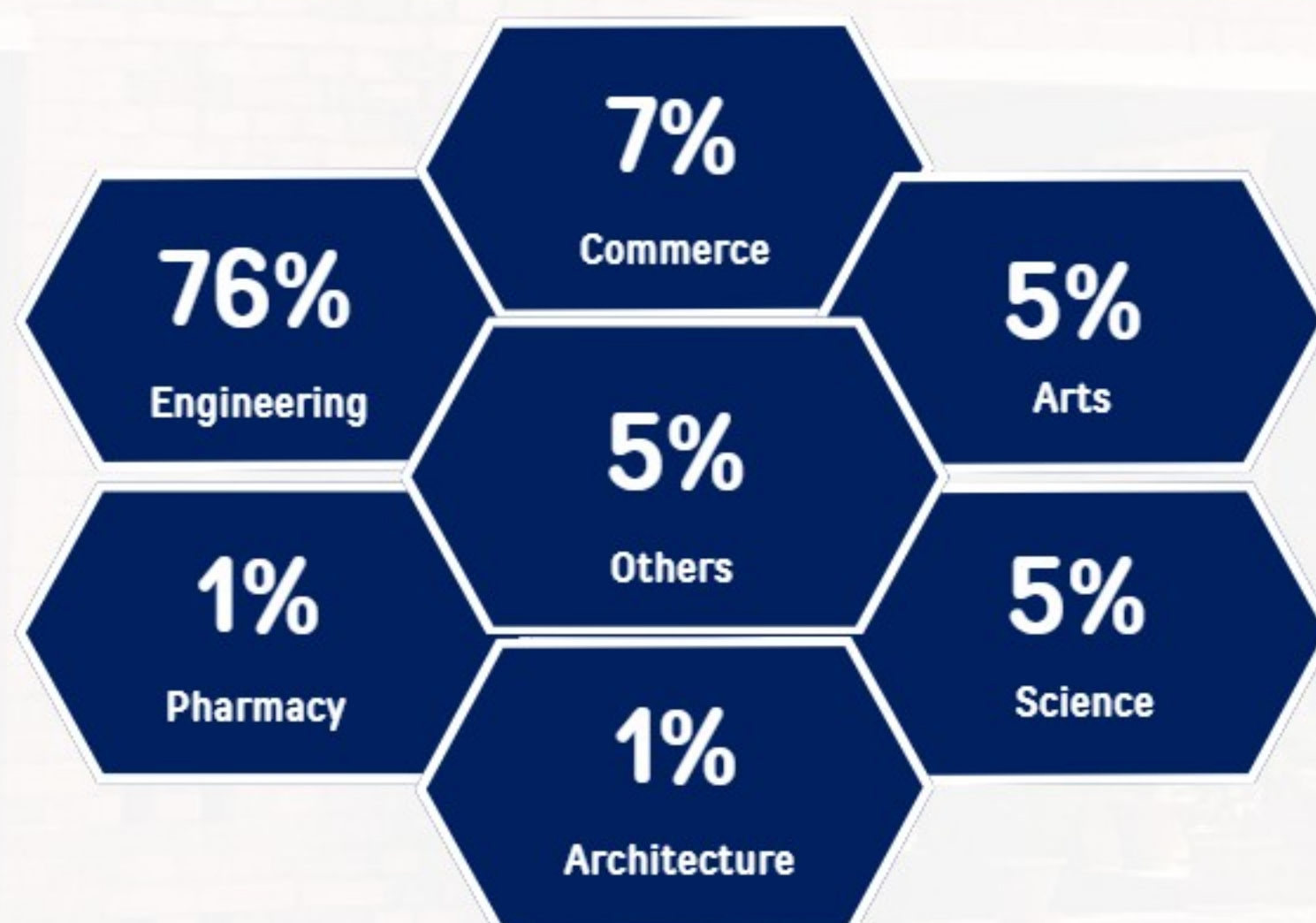
Top (From L to R): Hari Om Mishra, Shankhadeep Sengupta, Yaswanth Reddy Pappula, Mathew Kurian, Ankush Agrawal, Kushagra Manish, Achal Dubey
Bottom (From L to R): Ashwin Bhanot, Kushagra Rana, Aman Kabra, Akshita Singhania, Sanjay Kumar, Naman Agrawal



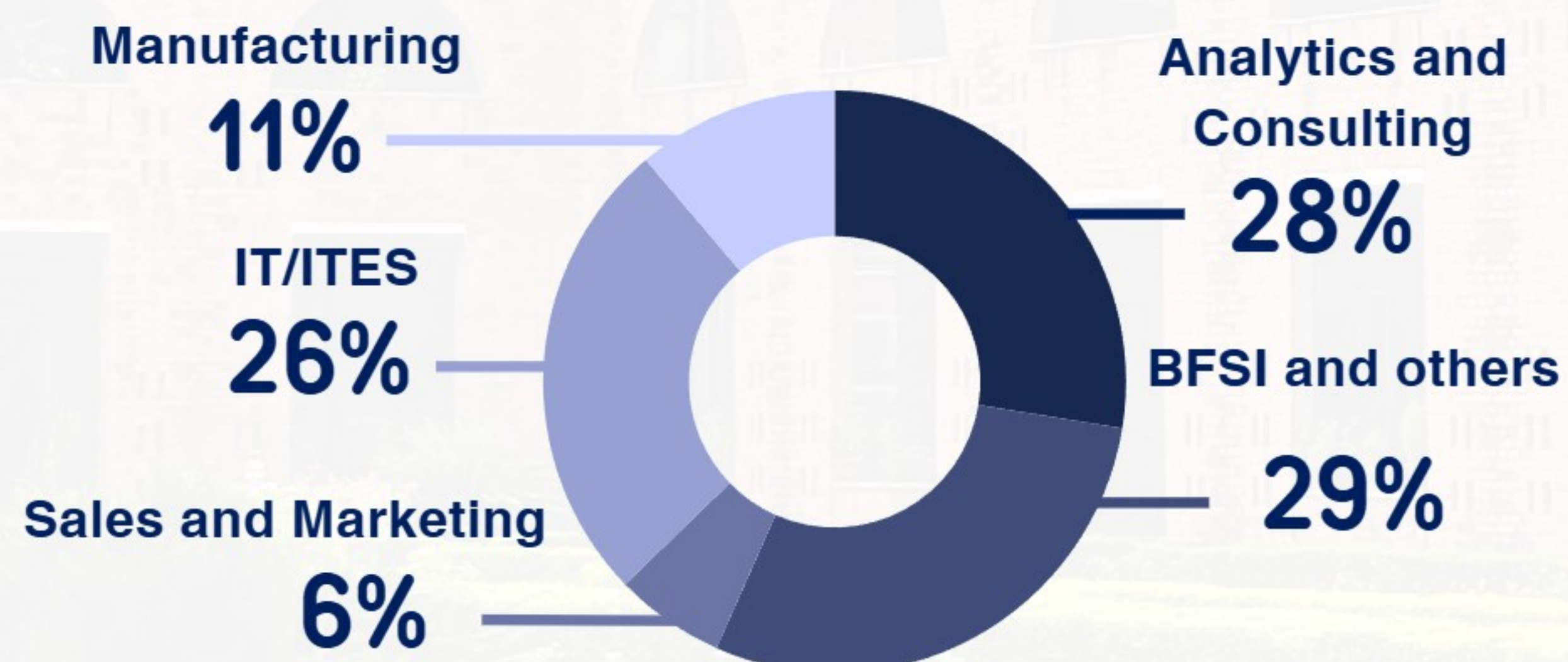
Batch Profile



Academic Background

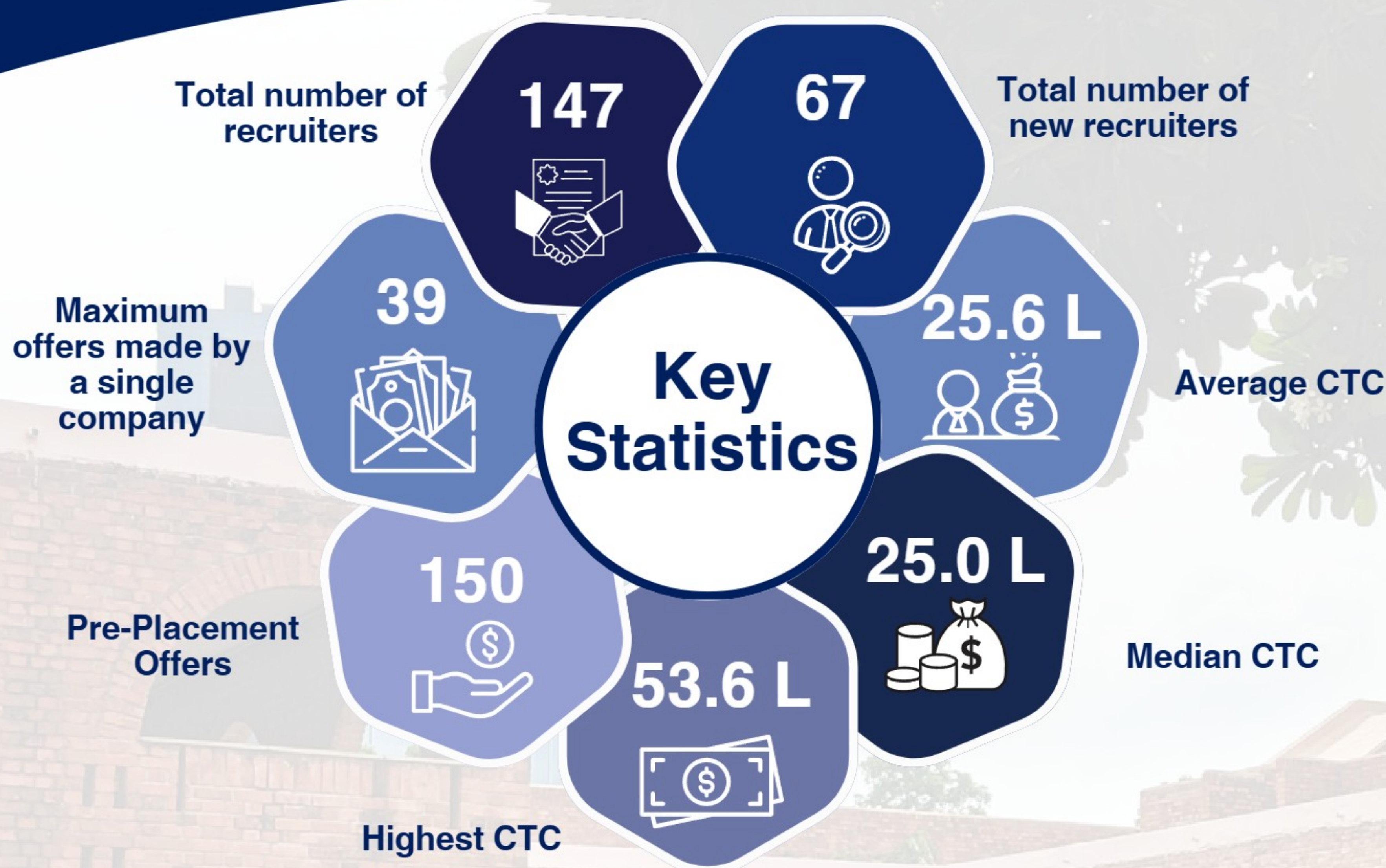


Work Experience Diversity



Work Experience Duration





AVERAGE CTC OVERVIEW



RECRUITERS

CONGLOMERATE & MANUFACTURING
(34)



BFSI (28)



CONSULTING (23)



HEALTHCARE & PHARMACEUTICALS (6)



FMCG/FMCD (15)



E-COMMERCE (12)



TECHNOLOGY, MEDIA & TELECOMMUNICATION
(29)



CTC Categorisation



Top 10 percentile

Average - 40.17 L
Median - 37.00L



Top 25 percentile

Average - 35.00 L
Median - 34.36 L



Top 50 percentile

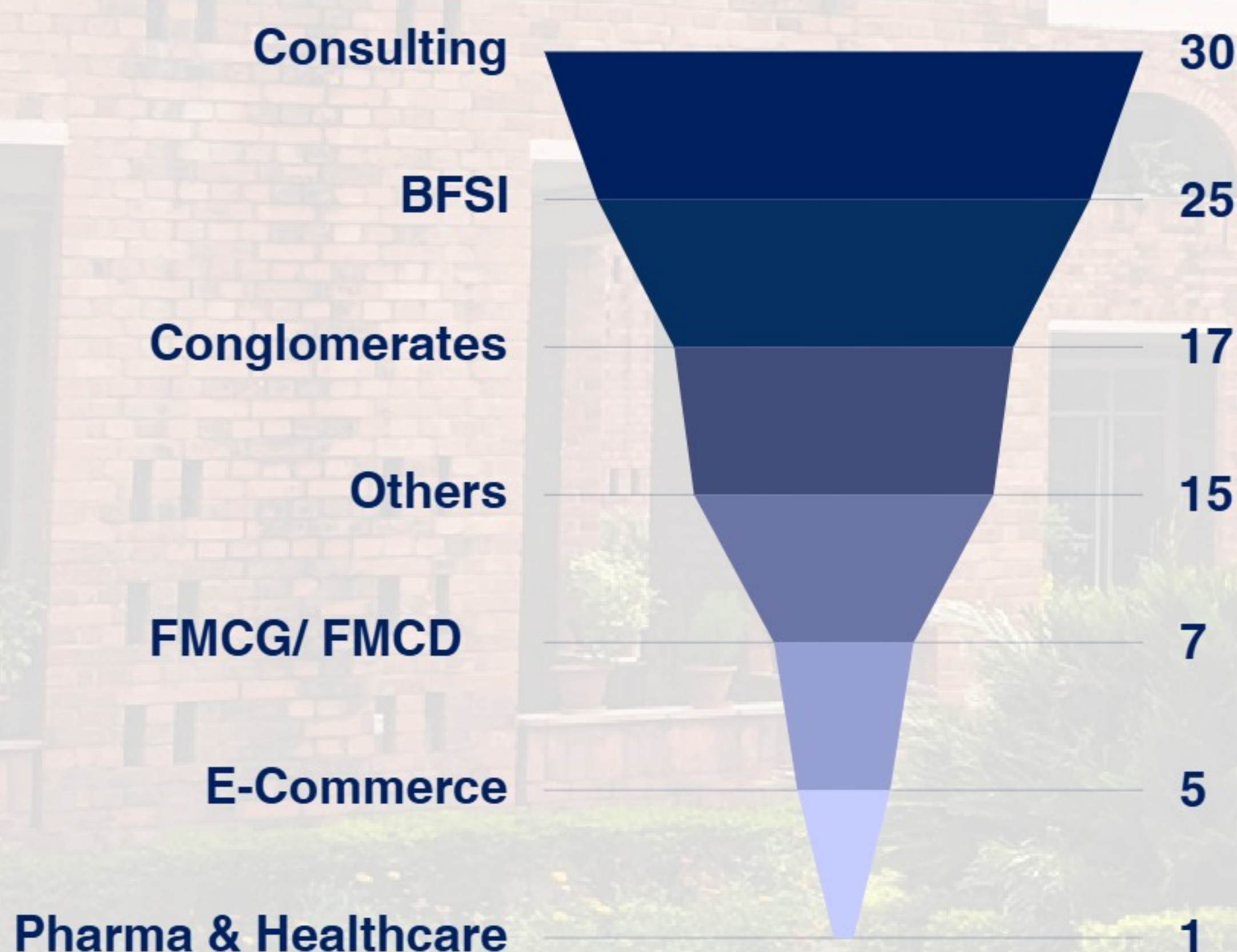
Average - 31.04 L
Median - 30.50 L



Entire Batch

Average - 26.20 L
Median - 26.20 L

Sector Wise Offers (%)



Number of Recruiters



PGDM & PGDM IB

- Consulting offers grew by 25%
- BFSI and Conglomerate recruiters rose by 13% and 23% respectively

CTC Categorisation



Top 10 percentile

Average - 39.87 L
Median - 35.64 L



Top 25 percentile

Average - 34.09 L
Median - 34.65 L



Top 50 percentile

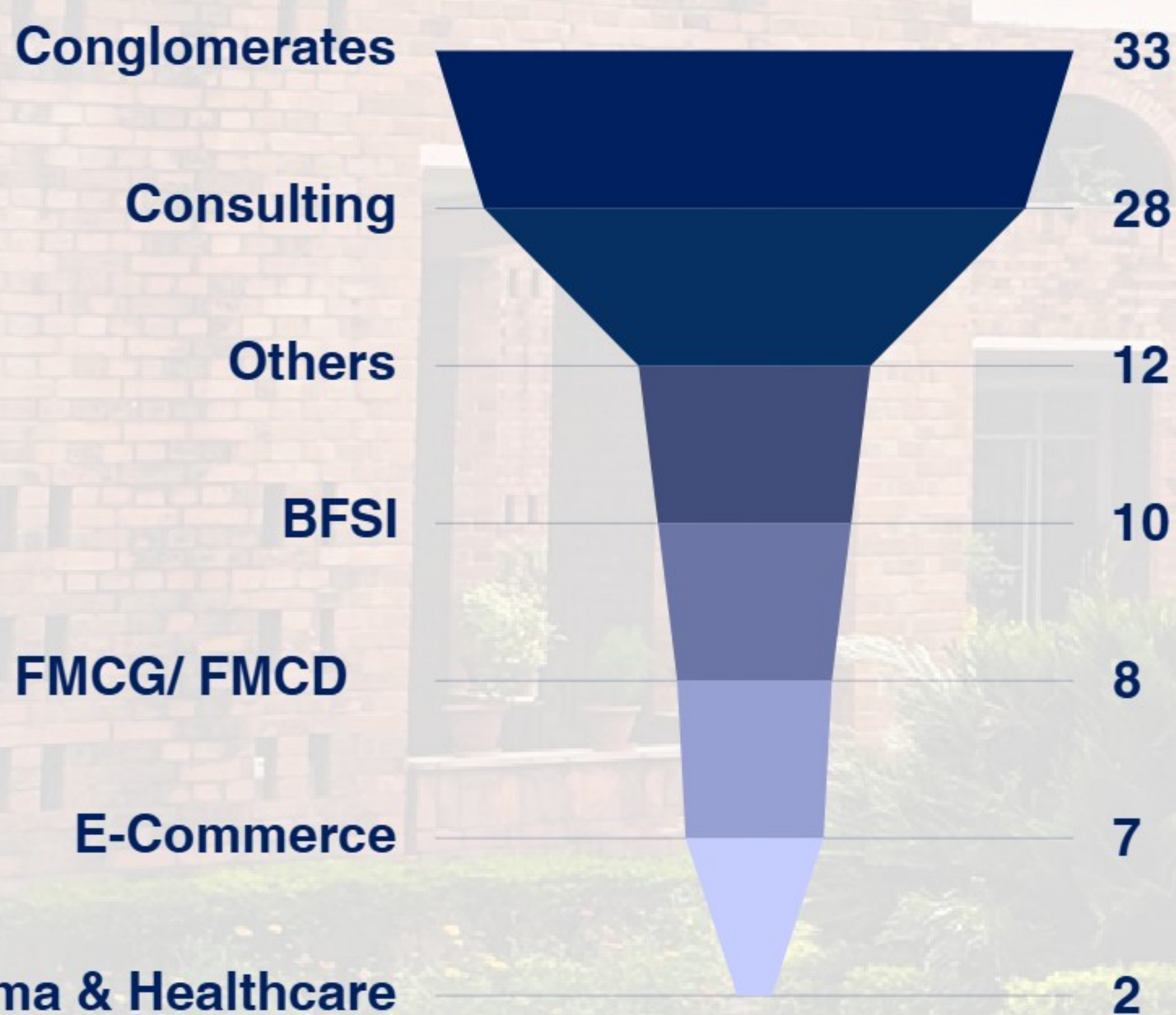
Average - 29.93 L
Median - 27.35 L



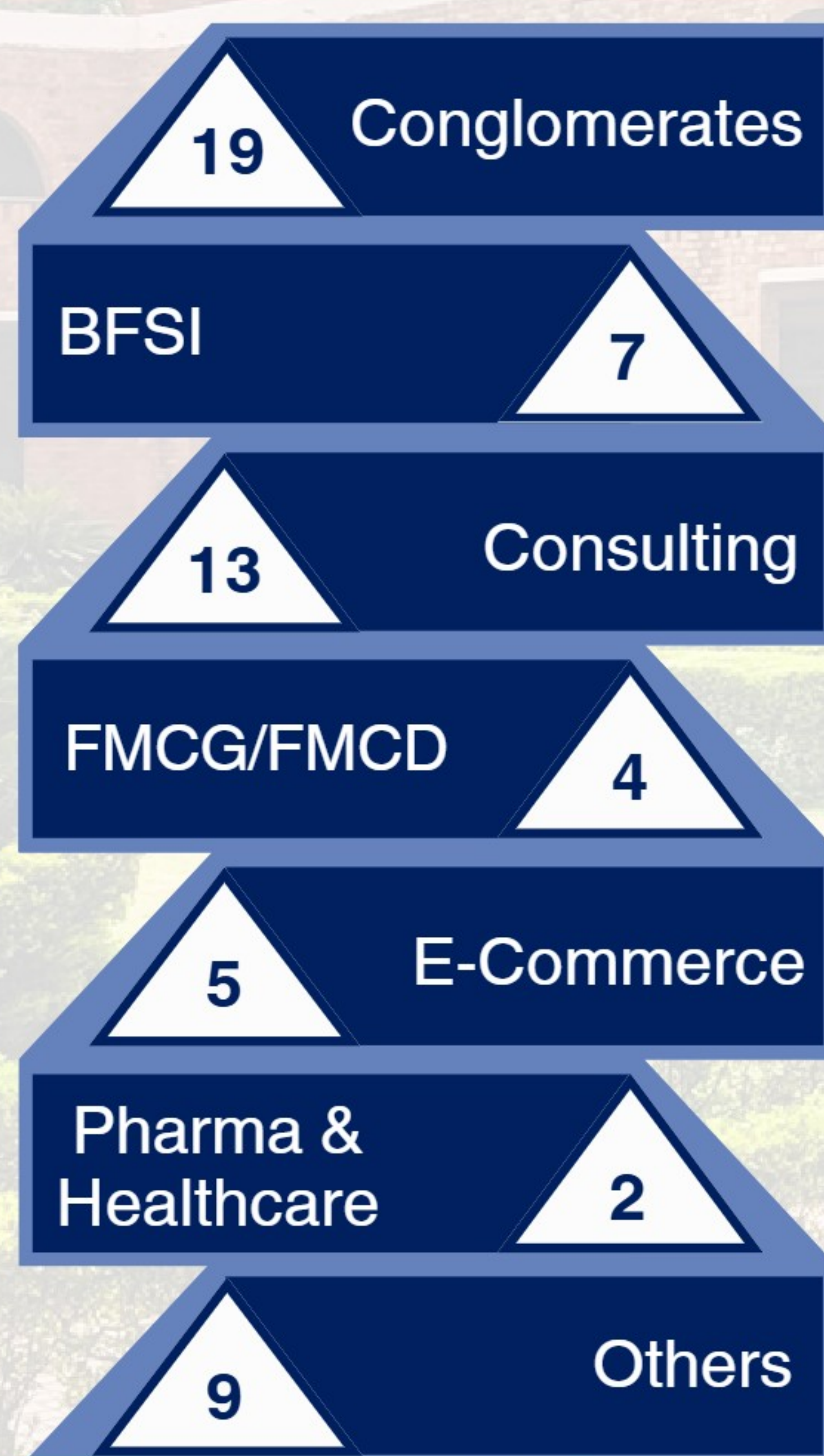
Entire Batch

Average - 24.14 L
Median - 22.50 L

Sector Wise Offers (%)



Number of Recruiters



PGDM-HRM

- Conglomerate offers rose 10%, backed by a 12% rise in recruiters.
- BFSI and Consulting recruiters grew by 17% and 8% respectively

CTC Categorisation



Top 10 percentile

Average - 35.82 L
Median - 35.82 L



Top 25 percentile

Average - 30.03 L
Median - 29.88 L



Top 50 percentile

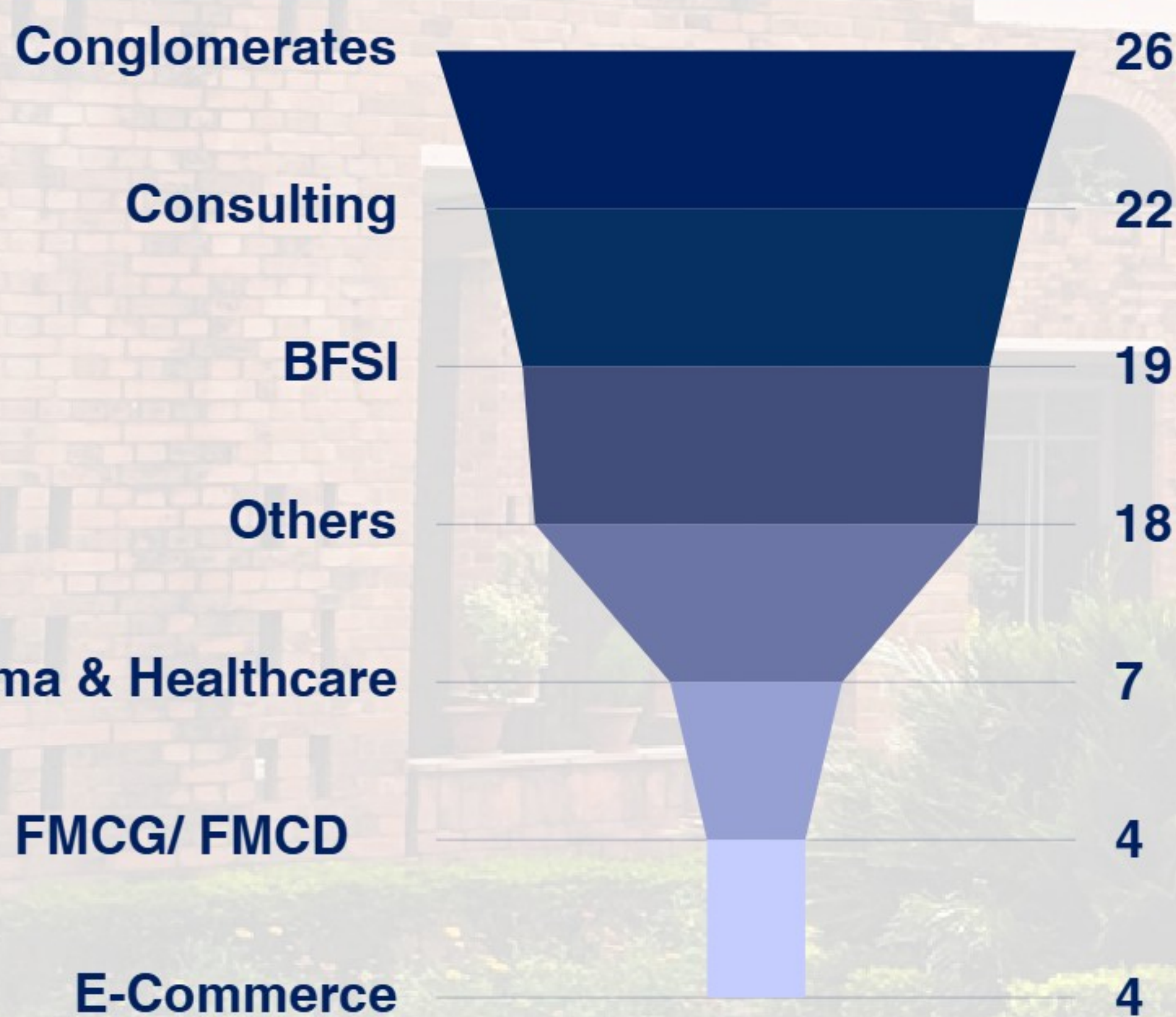
Average - 27.09 L
Median - 25.60 L



Entire Batch

Average - 22.75 L
Median - 21.65 L

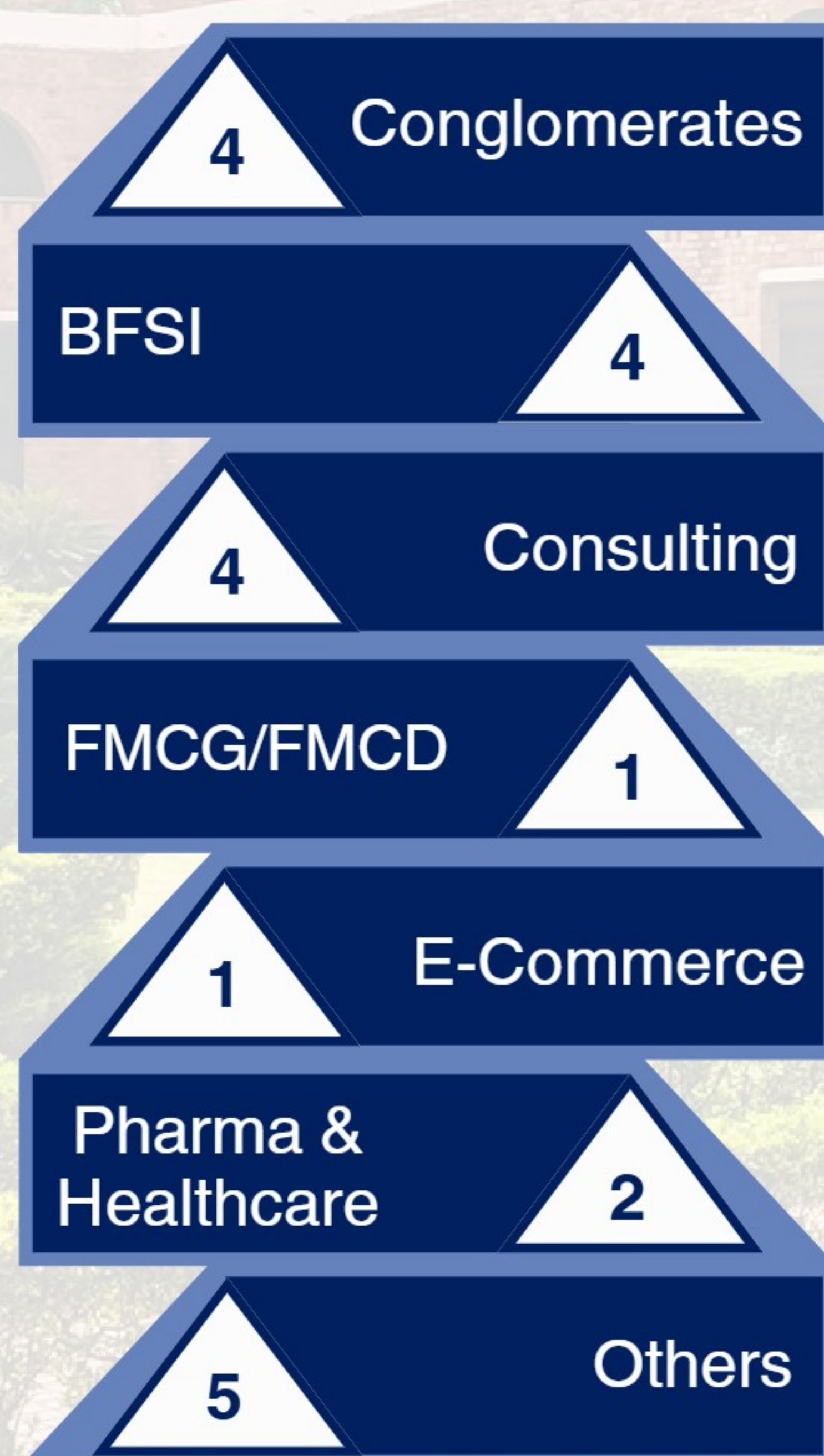
Sector Wise Offers



PGDM-BAN

- The first batch of PGDM-BAN program secured final placements with marquee firms like McKinsey & Co, JP Morgan Chase & Co., Goldman Sachs and Maruti Suzuki
- Axtia and GSK recruited for core Analytics roles

Number of Recruiters



Function Wise Highlights



Sales and Marketing

This year witnessed the involvement of prominent organizations such as **PepsiCo**, **ITC Limited**, **Reckitt**, **Perfetti Van Melle**, **Marico**. Industry stalwarts like **Godrej**, **Asian Paints**, **L'Oréal**, **Danone**, **RPG Group**, **Pidilite Industries**, **Philip Morris**, and **FedEx** further strengthened their presence with robust hiring activity. Additionally, top healthcare and pharmaceutical giants including **Cipla**, **Becton Dickinson**, **Haleon**, and **Dr. Reddy's Laboratories** provided coveted opportunities, reflecting MDI's strong industry connect.



Finance

Prominent recruiters in investment banking at MDI included **Goldman Sachs**, **JPMorgan Chase & Co.**, **D.E. Shaw India Private Limited**, **Nomura**, and **ICRA Limited**, reaffirming their strong presence on campus. In the corporate finance domain, leading organizations such as **American Express**, **InCred Wealth**, and **Godrej Properties Limited** actively engaged with MDI. Additionally, top retail banking institutions, including **Axis Bank**, **HSBC Bank**, **IDFC First Bank**, and **Standard Chartered Bank**, further strengthened their association with the institute.





IT & Operations

The IT & Operations sector showcased strong participation with esteemed organizations such as **American Express, PhonePe, Goldman Sachs, Optum, Blinkit, Coforge, Accenture Strategy & Consulting**, and **HCLTech**, offering key roles to students.



Consulting and General Management

The consulting sector saw strong participation from leading firms such as **Accenture Strategy, Boston Consulting Group, Deloitte USI, Everest Group, McKinsey & Company, PwC US Advisory, Synergy Consulting**, and **Willis Towers Watson**, reflecting robust recruitment activity. Additionally, industry giants including **Aditya Birla Group, Airtel, Amazon, Godrej, GMR Group, GroupM, Hinduja Group**, and **Reliance Industries Limited** offered sought-after roles in General Management.



Function Wise Highlights



Human Resources

MDI continued to reinforce its industry reputation by hosting leaders such as the **Aditya Birla Group**, **Reliance Industries Limited**, **Airtel**, and **McKinsey & Company**, further solidifying its standing as the premier institute for **HRM**. Esteemed organizations including **Amazon** and **Accenture Strategy** showcased their confidence in our talent pool through exciting opportunities.



HEARTFELT GRATITUDE

We sincerely appreciate the steadfast support, guidance, and encouragement of the Director, Dean, and esteemed faculty members at MDI Gurgaon. Their unwavering commitment has been a pillar of strength throughout our journey. Additionally, our extensive alumni network has played a vital role in facilitating connections with top-tier brands and strengthening ties with leading corporations. Their continuous support and willingness to share knowledge through interactive sessions have empowered students to capitalize on emerging opportunities.

We also extend our gratitude to our recruiters for their trust in MDI Gurgaon's talent pool and confidence in our capabilities. We look forward to further strengthening these partnerships and fostering greater collaboration in the future.



Dr. Kirti Sharma
Chairperson Placements -
Graduate Programs

PLACEMENT COMMITTEE



Dr. Anurag Singh Chauhan
Faculty In-Charge Placements -
Graduate Programs



Top (From L to R): Madhul Mayank, Shivanshu Singh, Shivam Sharma, Dhaval Kumar, Aayush Kumar Singh, Keshav Gupta
Bottom (From L to R): Arav Trehan, Rajat, Kavya Deep, Neha Roy Chowdhury, Meghna Ghosh, Mahajit Mukherjee, Prithviraj Tiwari